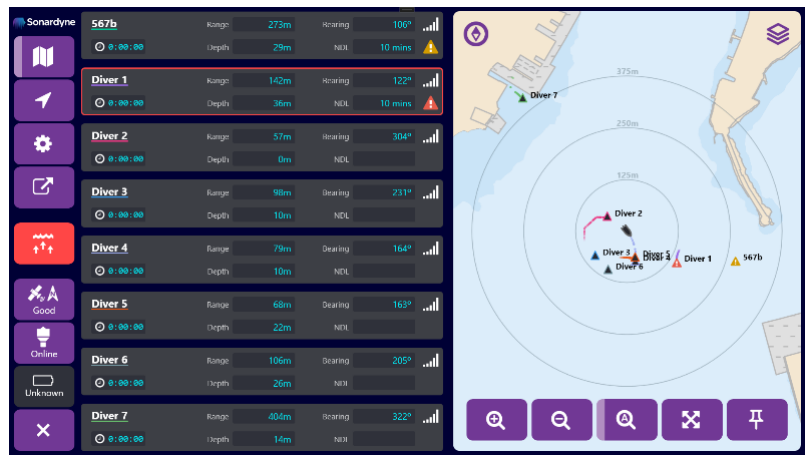
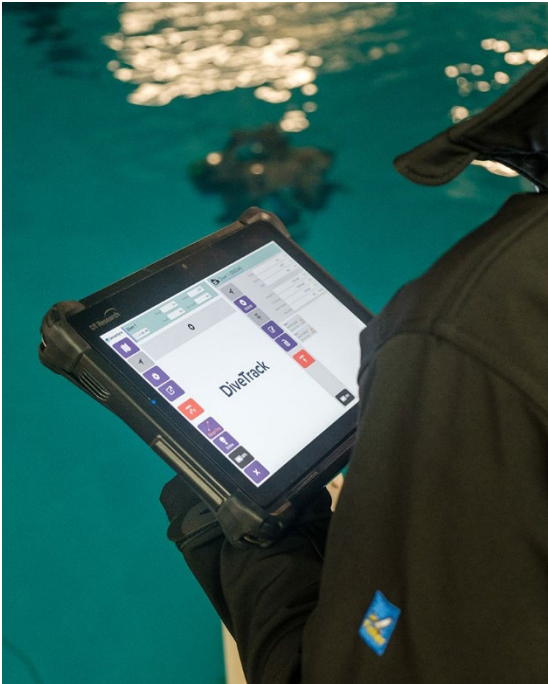


# Datasheet

## DiveTrack



### The DiveTrack system is designed for simultaneous tracking and communication with multiple divers.

DiveTrack provides a Dive Supervisor with situational awareness and monitoring of their dive team; vastly improving training and operational safety and efficiency.

The system comprises of four key components:

- DiveTrack Command Unit flight case
- DiveTrack Transponder flight case
- DiveTrack Deployment kit
- DiveTrack Software

The DiveTrack software allows a Dive Supervisor to localise and recall a dive team. DiveTrack can display and communicate with up to eight divers at once and includes background mapping functionality and post mission log export.

System reliability is key for diving and the DiveTrack transponder and transceiver utilise Sonardyne's

latest shallow water optimised telemetry, providing better multipath resistance and thus better range and robustness in littoral environments.

Ease of use and expandability is at the core of DiveTrack, a key part of this is working with existing dive computer and rebreather manufacturers. The system has been integrated with Shearwater DiveCAN computers and JFD Stealth and Shadow rebreathers.

DiveTrack provides an additional layer to the equipment safety case and to the risk mitigation in place for the dive plan without any increased physical or mental loading on the dive team. It provides an extra layer of defence against drill errors by the diver.

DiveTrack expands the envelope of what a dive team can achieve during training and operations. It provides flexibility and resilience to unexpected events: the mission is more likely to succeed.

### Key features

- Range > 1.5 km
- Two Peli case system
- Diver safe acoustic transmission
- Improves situational awareness of Dive Supervisor
- Simple to use
- 3 sec update rates to all divers
- 12/24 V charging and 10 hour+ battery life
- Shallow water acoustic signal set
- Pre-Canned diver messaging
- IP67
- EN60945, optional MIL-STD tablet
- Not export controlled
- S-57/S-63 ENC chart import
- Multi-band, use multiple systems within one area

# Specifications

## DiveTrack



Feature		DiveTrack Transceiver	DiveTrack Transponder
Operating range		>1,500 m <sup>1</sup>	>1,500 m
Depth rating		n/a	100 m
Frequency band		MF (20-28 kHz) <sup>2</sup>	MF (20-28 kHz)
Transducer beam shape		Omni-directional ±130°	Omni-directional ±130°
Source level (re 1 µPa @ 1 m)		181 dB	181 dB
Range precision		Better than 15 mm	Better than 15 mm
Position accuracy		3-5% slant range	n/a
Communication interface		Ethernet/Wi-Fi <sup>3</sup>	RS232/CANbus <sup>4</sup>
Depth sensor		n/a	10 bar abs ±0.7% full scale
Power supply <sup>5</sup>		12/24 V dc & 115/230 V ac	12/24 V dc
Power consumption	Charging	~30 W	~6 W
Battery life	Quiescent listening	n/a	>3 days
	At DiveTrack ping rate	>10 hours	>10 hours
External connections		Bulgin 6000 series	Subconn MCIL8M
Mechanical construction		Polymer & Stainless Steel	Polymer
Operating temperature <sup>6</sup>		-15 <sup>7</sup> to 50°C	-30 to 50°C
Storage temperature		-30 to 55°C	-30 to 55°C
Dimensions (length x width x depth)		177 x 106 x 106 mm	192 x 55 x 55 mm
Weight in air/water		1.84/0.99 kg	584/162 g
Peli case dimensions (length x width x depth)		524 x 428 x 206 mm	524 x 428 x 206 mm
Peli case weight in air		13 kg	13 kg

<sup>1</sup> Dependent on environment.

<sup>2</sup> User selectable band in which to work.

<sup>3</sup> Selectable on/off.

<sup>4</sup> For Interfacing to Shearwater DiveCAN.

<sup>5</sup> Mains/Vessel charging.

<sup>6</sup> Battery will not charge above 40 or below 0°C.

<sup>7</sup> Tested to -20°C, CE certified to -15°C.