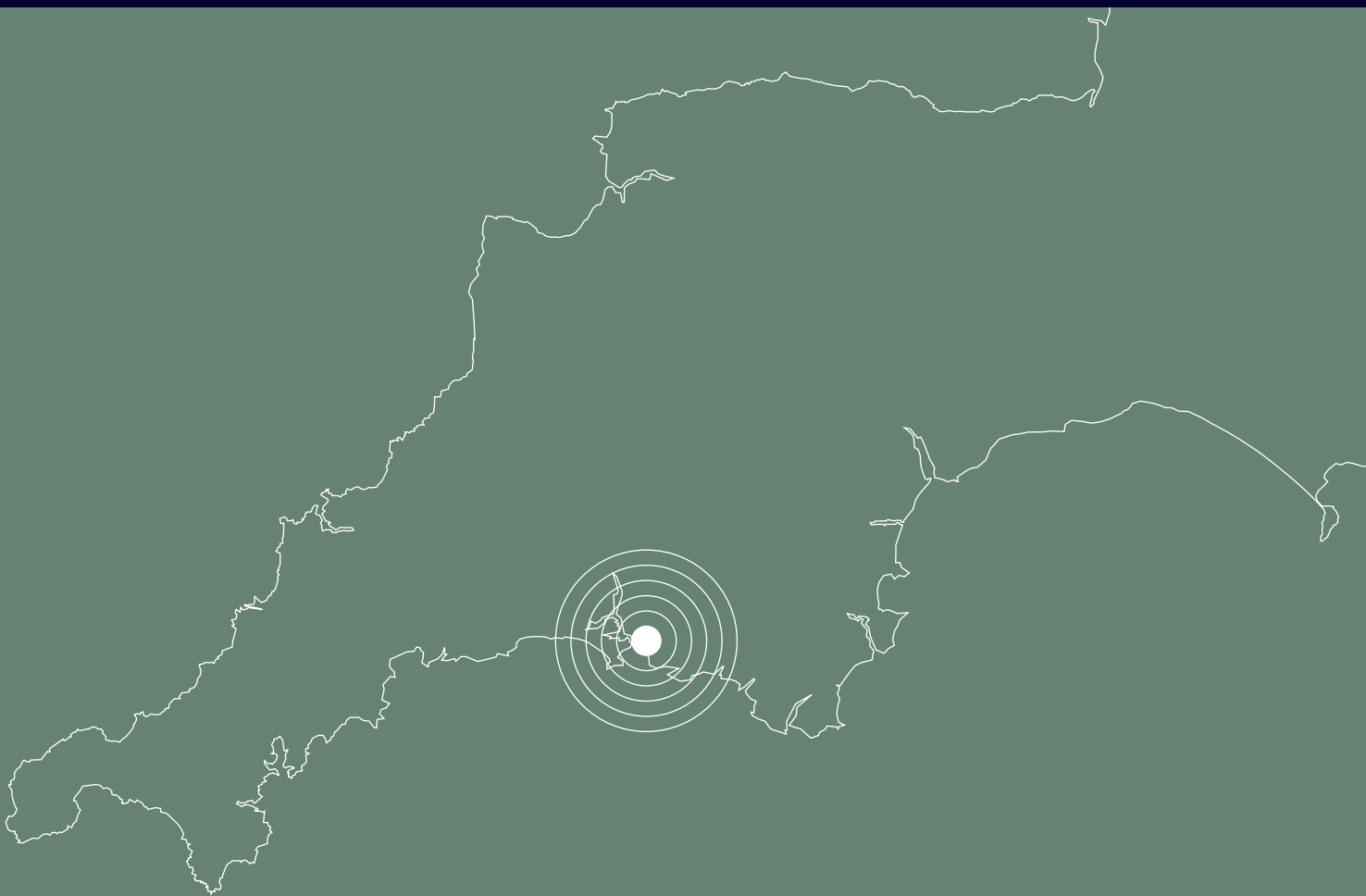


# Sonardyne Plymouth

vessel charter testing trials facilities



## SONARDYNE PLYMOUTH

# VESSEL CHARTER, TESTING AND TRIALS FACILITIES

**IF YOU NEED TO EVALUATE NEW TECHNOLOGY AT SEA, REHEARSE OFFSHORE OPERATIONS OR CONDUCT IMPORTANT DEMONSTRATIONS, THEN WHY NOT CONSIDER CHARTERING OUR WORLD-CLASS TESTING AND TRIALS FACILITY IN PLYMOUTH, SOUTHWEST ENGLAND? WE HAVE AVAILABLE SURVEY VESSELS, TRAINING FACILITIES AND EXPERTS IN THE DEPLOYMENT AND RECOVERY OF SURFACE AND SUBSEA TECHNOLOGIES FOR OCEAN SCIENCE, OFFSHORE ENERGY, MARITIME SECURITY, DEFENCE AND MARINE AUTONOMY.**

### WHY PLYMOUTH?

The naval port city of Plymouth is located on the south coast of Devon, about 190 miles southwest of London. It lies between the mouths of the rivers Plym to the east and Tamar to the west. Where they join is Plymouth Sound, widely regarded as one of the world's most impressive natural harbours.

As a location for marine research and development, the area's appeal lies in the diversity of water bodies, water depths, harbours and natural inlets that are on offer within a short transit from one of the city's many marinas. This maximises the time available to deploy and evaluate equipment following arrival at a test site.

Our base of operations is Pier House in Turnchapel, a waterside village overlooking the city. Accommodation includes a large training room, well-appointed workshop, electronics lab, boathouse and tidal slipway and pier. Our vessel fleet is berthed in nearby Mayflower Marina which offers immediate access to the water whatever the time of day or year it is.

### DIVERSE TESTING ENVIRONMENTS

We regularly conduct vessel operations around Plymouth Sound which has three approaches. The marine entrance is from the English Channel to the south, with a deep-water channel to the west of the Plymouth Breakwater. There are two fresh-water inlets: one, from the north-west, is from the River Tamar via the Devonport Dockyard, the largest naval dockyard in western Europe. The other, is from the River Plym in the northeast, which empties into Cattewater harbour between Mount Batten and the Royal Citadel.

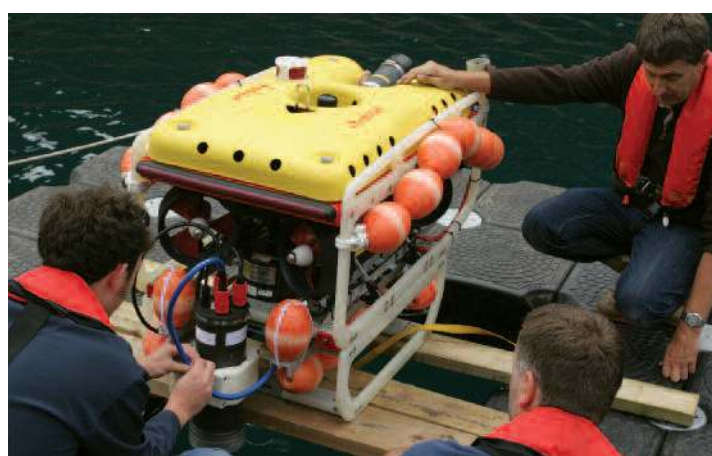


### WHY TEST WITH US?

- World-class testing facilities, competitively priced to lower your R&D costs
- Daily or weekly charters available
- Choice of modern, high specification survey vessels
- Everything onsite; offices, workshops and classrooms
- Help from highly experienced crews and marine engineers
- Wide range of marine environments within a short transit
- Access to Sonardyne equipment; e.g. acoustic tracking system









## CHARTER VESSELS

# ECHO EXPLORER

**ECHO EXPLORER IS A 12 METRE COMMERCIAL CATAMARAN CLASSIFIED BY THE UK'S MARITIME AND COASTGUARD AGENCY FOR CHARTER VESSEL OPERATIONS OUT TO 60 NAUTICAL MILES DAY OR NIGHT. SHE IS A SPACIOUS, WELL-APPOINTED SURVEY-GRADE VESSEL WITH A LARGE INTERIOR, GENEROUS BACK DECK, MOONPOOLS AND REMOTELY CONTROLLED CRANE TO ASSIST WITH THE SAFE DEPLOYMENT AND RECOVERY OF EQUIPMENT, UNDERWATER VEHICLES AND AUTONOMOUS SURFACE VESSELS.**

### VESSEL OVERVIEW

As the demand for more capable and versatile marine technology has risen, so has the requirement for more robust in-water testing and development. Launched in 2014, Echo Explorer is purpose built for the task.

The 12 metre long catamaran is equipped with two 420 horsepower Iveco engines allowing speedy transits out to 60 miles from any port by day or night. Destination reached, her three moon pools provide the ability to deploy a range of subsurface technologies and instruments. A fourth, large central moon pool and hydraulic crane can be used to deploy much larger subsea equipment including underwater drones and unmanned surface vehicles. Echo Explorer also has a 550 kilogram rated hauler on the port side.

### EQUIPPED FOR ANY OPERATION

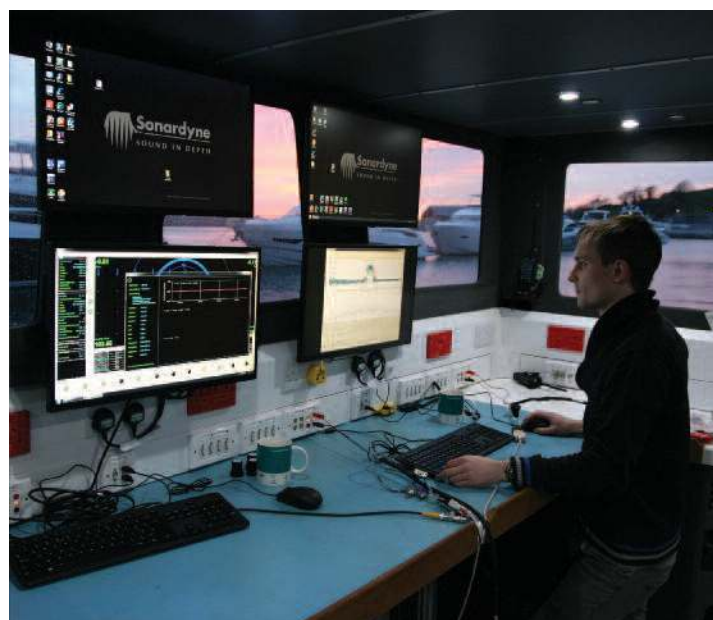
The internal cabin provides ample work space for setting up equipment and conducting trials. 12 personnel and three crew can be accommodated onboard. As a minimum, our crew hold an ENG1 or ML5 medical certificate.

Echo Explorer is fitted out with the latest Garmin satellite navigation system and a full suite of Sonardyne's 6G navigation and positioning equipment which can be made available to support your work. A 240 volt UPS guarantees you have access to smooth, clean power onboard. Three 4G connections utilising overlapping networks, ensure you stay connected when alongside or out at sea.

### ECHO EXPLORER AT A GLANCE

- Coded for operations out to 60 miles offshore
- Can accommodate up to 12 personnel
- Well-appointed working interior
- 500 kg WWL rated deck crane; 350 kg WWL rated hauler
- Four moonpools; various sizes
- Survey equipment mounting brackets on bow
- On-board WiFi/ 4G connectivity/ UPS







## CHARTER VESSELS

# SOUND SURVEYOR

**SOUND SURVEYOR SHARES MANY OF THE DESIGN FEATURES OF HER SISTER VESSEL, ECHO EXPLORER. SHE IS 12 METRES LONG AND ALSO CODED BY THE MCA TO CONDUCT MARITIME OPERATIONS OUT TO 60 NAUTICAL MILES 24 HOURS A DAY. SHE IS A POPULAR CHARTER VESSEL FOR DEPLOYING SUBSEA INSTRUMENTATION, CONDUCTING SURVEYS USING DIVERS, OPERATING AUTONOMOUS UNDERWATER VEHICLES AND REHEARSING COMPLEX OFFSHORE PROJECTS.**

### VESSEL OVERVIEW

Designed and built in 2007 to our specification, Sound Surveyor's twin hull design offers a large, stable survey platform that can cope with a range of sea conditions. She has a proven track record in supporting R&D activities, equipment demonstrations and as a floating classroom to assist with operator training.

Inside, the light and airy cabin provides space for 12 personnel and has all the power and mobile connectivity that might be needed to support operations whilst at sea. The open layout provides excellent all-round visibility for overseeing operations out on the water, and maintaining easy communication with the helmsman and back deck.

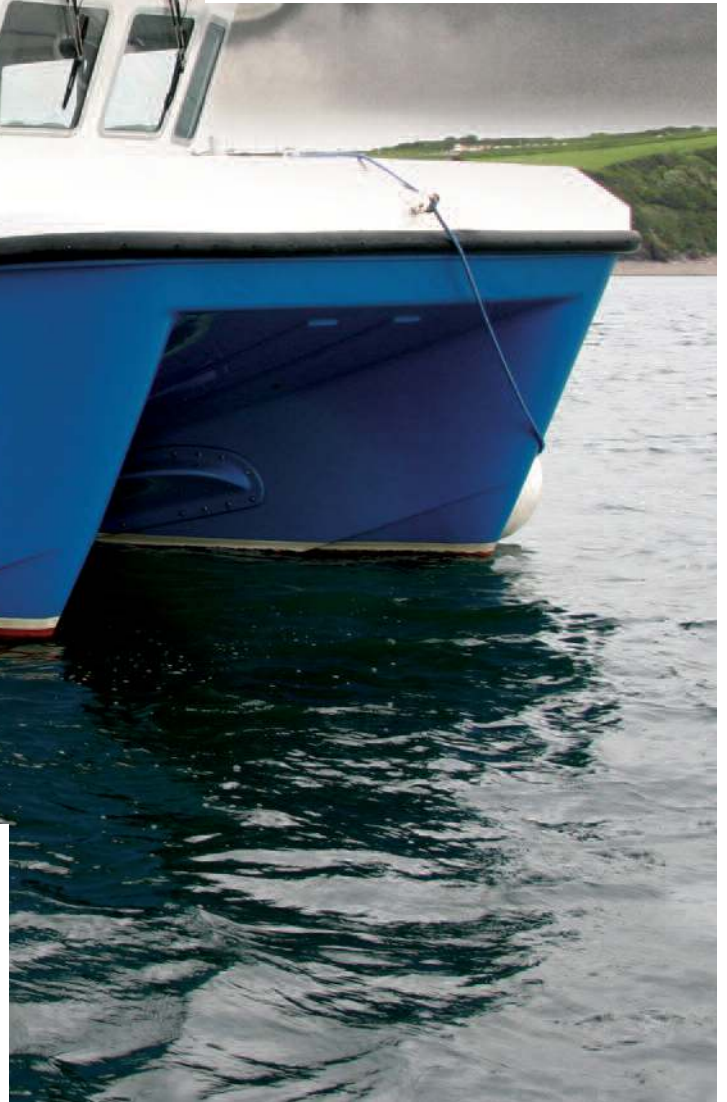
The Heila deck crane has a Working Load Limit of 500 kilograms providing you with the capability to deploy and recover Observation-class ROVs, autonomous underwater vehicles and unmanned surface platforms of the type now in use within the offshore, marine science and defence sectors. Two moon pools provide the option of deploying smaller instrumentation and sensors.

### SOUND SURVEYOR AT A GLANCE

- Coded for operations out to 60 miles offshore
- Can accommodate up to 12 personnel at sea
- Spacious cabin and back deck
- Port and starboard inboard moonpools
- 500 kg WWL deck crane
- 350 kg WWL rated hydraulic capstan winch
- Full suite of Raymarine navigation equipment









## SUPPORT RESOURCES

# PIER HOUSE, VAL B, ROV, RHIB

**AS WELL AS OUR TWO EXTREMELY CAPABLE SURVEY VESSELS, YOU CAN ALSO CHARTER OUR ONSHORE FACILITIES AT PIER HOUSE, A STATIC FLOATING CLASSROOM, INSHORE REMOTELY OPERATED VEHICLE AND SEVEN METRE RIGID HULL INFLATEBALE. THESE CAN BE HIRED ON AN INDIVIDUAL BASIS, IN PART WITH ECHO EXPLORER OR SOUND SURVEYOR, OR AS A COMPLETE PACKAGE ABLE TO SUPPORT LARGE PROJECTS AND THEIR ENGINEERING SUPPORT TEAMS.**

### PIER HOUSE

Pier House offers flexible workspace spread over three floors. The large boat garage on the ground floor can be used to safely store your equipment prior to your arrival in Plymouth, and enable you carry out pre-deployment test and checks. A slipway provides tidal access to the water.

On the first floor, there is a fully equipped training room with multiple PC workstations, large screens and high speed internet. Across the landing, a full service kitchen leads to a large balcony boasting impressive views of Plymouth city centre. On the third floor, there are four, twin bedrooms.

### VAL B

Val B is a static catamaran that can be used as an in-water testing facility, classroom or client presentation space depending on your needs. The vessel is equipped with four moon pools (two aft and two foreword), GPS, attitude sensor, 19 inch computer rack with three PCs and other interface units, overhead projector, guest WiFi, hot and cold drinks making facilities and seating for up to eight people. She is conveniently birthed next to Sound Surveyor and Echo Explorer for easy transfer of personnel and equipment.

### FALCON ROV

With a 300 metre depth rating, 14 kilogram payload and hi-resolution camera, our Seaeye Falcon Remotely Operated Vehicle (ROV) is suitable for a wide range of inshore operations. Supplied with a fully trained operator, it can be operated from onboard Echo Explorer, Sound Surveyor, in a marina or away from Plymouth at a location of your choosing.

### TORNADO RHIB

Based at Pier House, our seven metre Rigid Hull Inflatable Boat (RHIB) primarily acts as a support craft to Echo Explorer and Sound Surveyor. Agile and capable, the RHIB can be used to rapidly transfer personnel between vessels, recover instruments or tow small unmanned platforms to and from a test site.

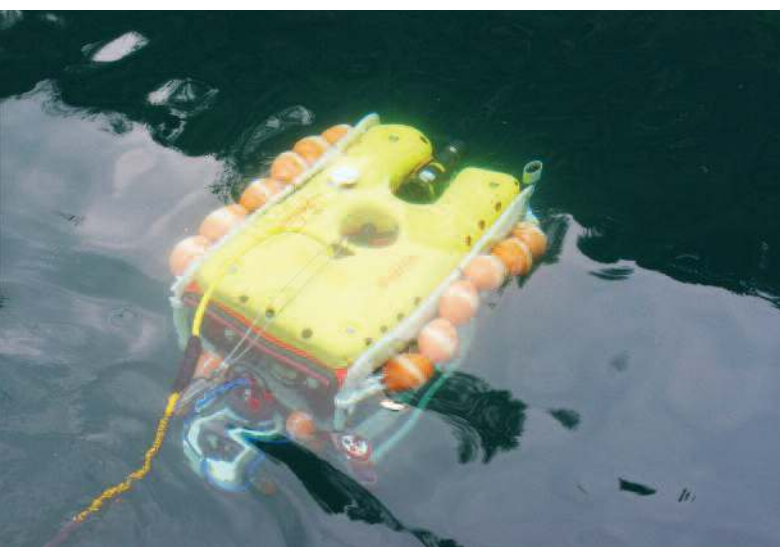


### SUPPORT FACILITIES AT A GLANCE

- Mix and match the assets you need; classrooms, workshop, ROV and support craft
- Charter one or the entire facility
- Fully insured and experienced crew
- One day minimum charter period
- AV facilities and guest WiFi included
- Onsite parking at Pier House









## HELP AND SUPPORT

# TRIALS PLANNING, ADVICE AND PREPARATION

**MOBILISING EQUIPMENT AND PERSONNEL TO UNDERTAKE OPERATIONS ON THE WATER IS EXPENSIVE, TIME CONSUMING AND NOT WITHOUT RISK. THAT'S WHY WHEN YOU CHARTER ONE OF OUR PLYMOUTH-BASED SURVEY VESSELS OR FACILITIES, YOU GET MORE THAN JUST A BOAT OR FLOATING CLASSROOM. YOU GET THE KNOWLEDGE AND EXPERIENCE OF OUR MARINE ENGINEERS AND QUALIFIED LOCAL SKIPPERS WHO ARE FULLY COMMITTED TO ENSURING YOUR CHARTER WITH US IS A COMPLETE SUCCESS AND MEETS ALL OF YOUR OBJECTIVES.**

### WORKING WITH YOU

We have decades of combined experience operating vessels and testing equipment in the waters around Plymouth and beyond. We have intimate knowledge of the rules and regulations affecting marine operations close to the local naval bases, and we know all the best places to test equipment. Whether you need shallow water, open water away from recreational craft to run autonomous surface vessels, or interesting wrecks to evaluate the capabilities of side-scan sonars, we know where to take you.

In support of our own activities within offshore energy, marine robotics, ocean science and defence, we have extensive experience integrating third-party surface and subsea technologies – and even land-based position reference systems. This has enabled us to develop trials plans and procedures to accommodate non-specific Sonardyne equipment, such as surface navigation equipment, towfish, unmanned underwater platforms and seafloor sensors.

We can tailor your charter to your precise needs, assist with planning, coordinate the logistics and manage your safety. This allows you and your team to focus on the task in hand, and achieve the best use of the time available.

Why not get in touch to find out how we can help you with your next project? Search: 'Sonardyne Plymouth' to visit our dedicated website.

### HELP AND ADVICE AT A GLANCE

- Decades of experience at your disposal
- Fully qualified marine engineers and skippers
- Assistance with trials planning and procedures
- Extensive knowledge of local waters
- Available for charters away from Plymouth







**Global Headquarters**

**T** +44 1252 872288  
[sales@sonardyne.com](mailto:sales@sonardyne.com)

**Aberdeen, UK**

**T** +44 1224 707875  
[sales@sonardyne.com](mailto:sales@sonardyne.com)

**Houston, USA**

**T** +1 281 890 2120  
[usa.sales@sonardyne.com](mailto:usa.sales@sonardyne.com)

**Singapore**

**T** +65 6542 1911  
[asia.sales@sonardyne.com](mailto:asia.sales@sonardyne.com)

**Rio das Ostras, Brasil**

**T** +55 22 2123 4950  
[brasil.sales@sonardyne.com](mailto:brasil.sales@sonardyne.com)

**24 Hour Emergency**

Telephone Helpline  
[support@sonardyne.com](mailto:support@sonardyne.com)

[sonardyne.com](http://sonardyne.com)

